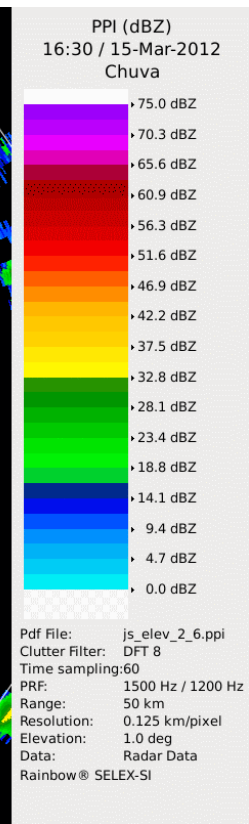
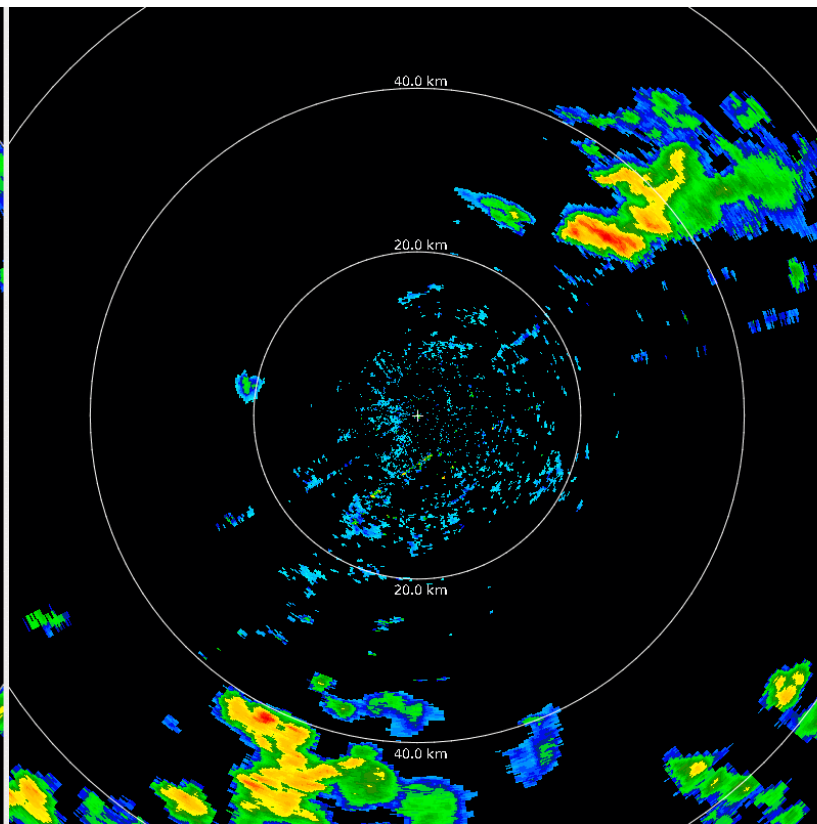
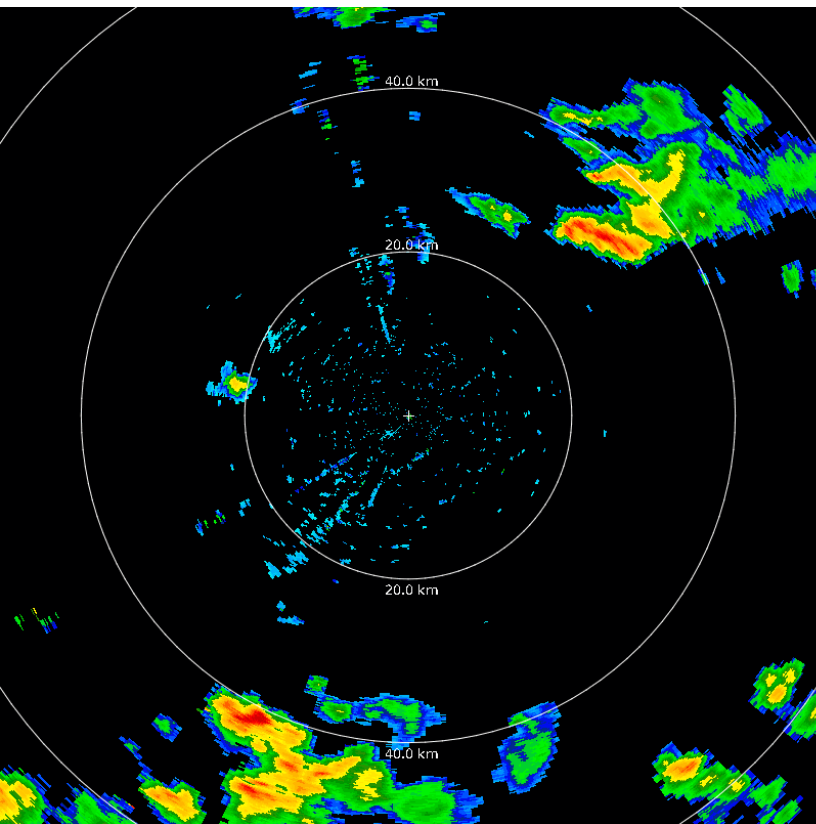




SigmaCast **A Geographical Information System for** **Nowcasting**

Cintia Freitas, Mario figueiredo, Denis Silva, Luiz.machado@cptec.inpe.br

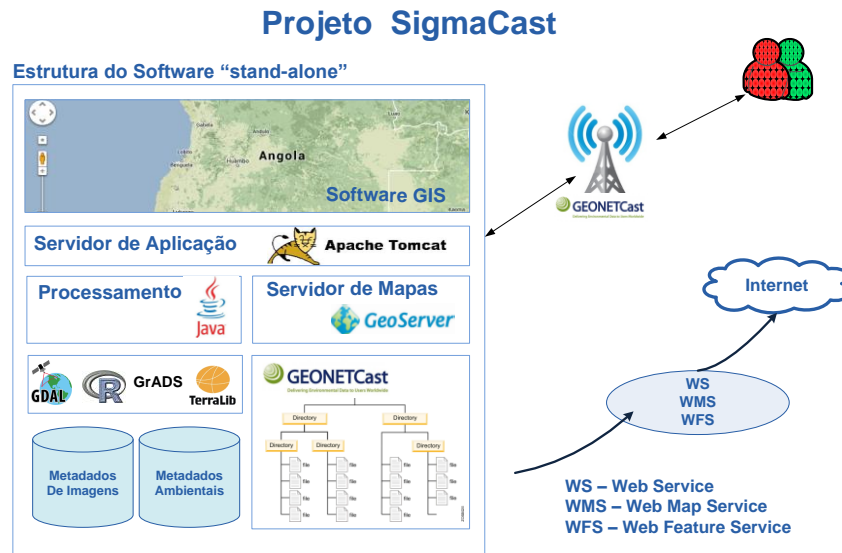
WWW.CPTEC.INPE.BR

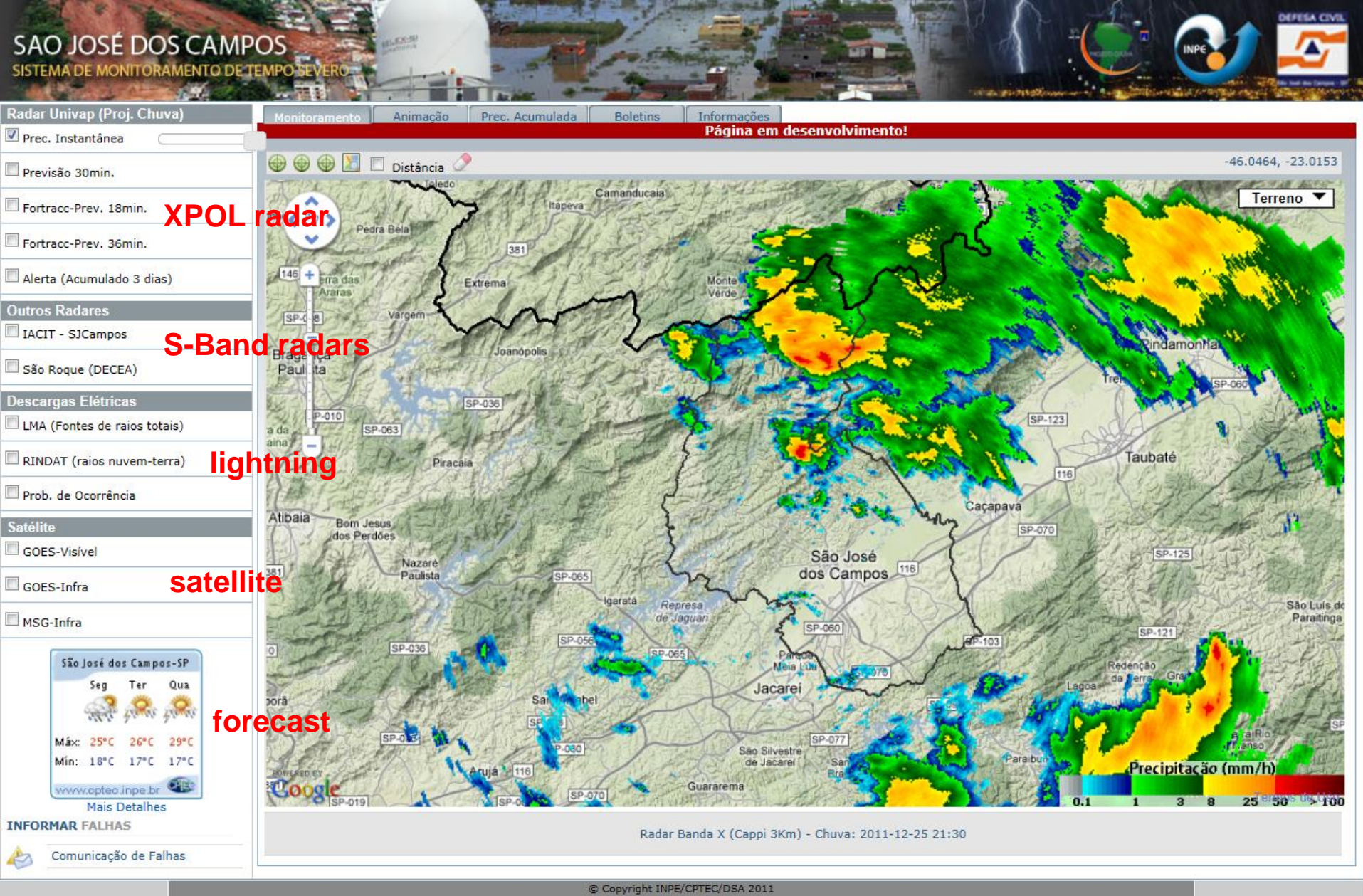


This is a Web based Geographic Information System. This system is a useful tool to interpret, summarize and integrate the environmental information and display or sends warning for emergency management groups. This is an open access system to also serve the population giving real time information to reduce citizen vulnerability

The system has Google Earth as background and is built using Java, Geoserver, GeoTools, R, GDAL, TerraLib e Grads – open source

The system is being developed to be used with Goenetcast Americas or Eumetcast system





São José dos Campos System – sources of information



Boletins

Acumulado 3 dias

Legenda

- 0 - 30 (Normal)
- 30 - 60 (Atenção)
- 60 - 100 (Alerta)
- > 100 (Emergência)

INFORMAR FALHAS

Comunicação de Falhas

Precipitação acumulada nos últimos 3 dias Data atual: 2011-12-21 16:54

Bairro	Chuva (mm)	Estado
JD SANTA INES II	71.4	
JD NOVA DETROIT	66.5	
JD SAO VICENTE	66.5	
CJRES JD DAS FLORES	64.75	
JD MOTORAMA	64.05	
JD REPUBLICA	64.05	
JD COQUEIRO	63.35	
CJHAB JD SAO JOSE	62.65	
EUGENIO DE MELO	61.6	
JD DOS BANDEIRANTE	61.25	
JD SANTA INES I	61.25	
JD SANTA INES III	60.55	
SANTA EDWIGES	59.85	
JD NOVA REPUBLICA	58.45	
JD PARARANGABA	58.45	
CJRES JK	57.05	
JD LESTE SAO JOSE	57.05	
JD ITAPUA	56.35	
JD IPE	54.95	
RES ARMANDO MRIGHI	54.25	
JD VALPARAIBA	53.2	
VL PATRICIA	53.2	
PQ RES VILLAGGIO DANTONINI	51.8	
VISTA VERDE	51.8	
JD COLONIAL	51.1	
COND FLORESTA	50.75	
JD CRUZEIRO DO SUL	50.75	
JD IMPERIAL	50.4	

System can also provide a list of neighborhoods sorted by rainfall

☒ Prec. Instantănea

 Previsão 30min.

Fortracc-Prev. 18min.

Fortracc-Prev. 36min.

☐ LMA (Fontes de raios totais)

24-02-2012

☐ Prec. Instantănea

☐ Previsão 30min.

Fortracc-Prev, 18min.

Fortracc-Prev. 36min.


☐ LMA (Fontes de raios totais)

27-03-2012

☐ Prec. Instantănea

 Previsão 30min.

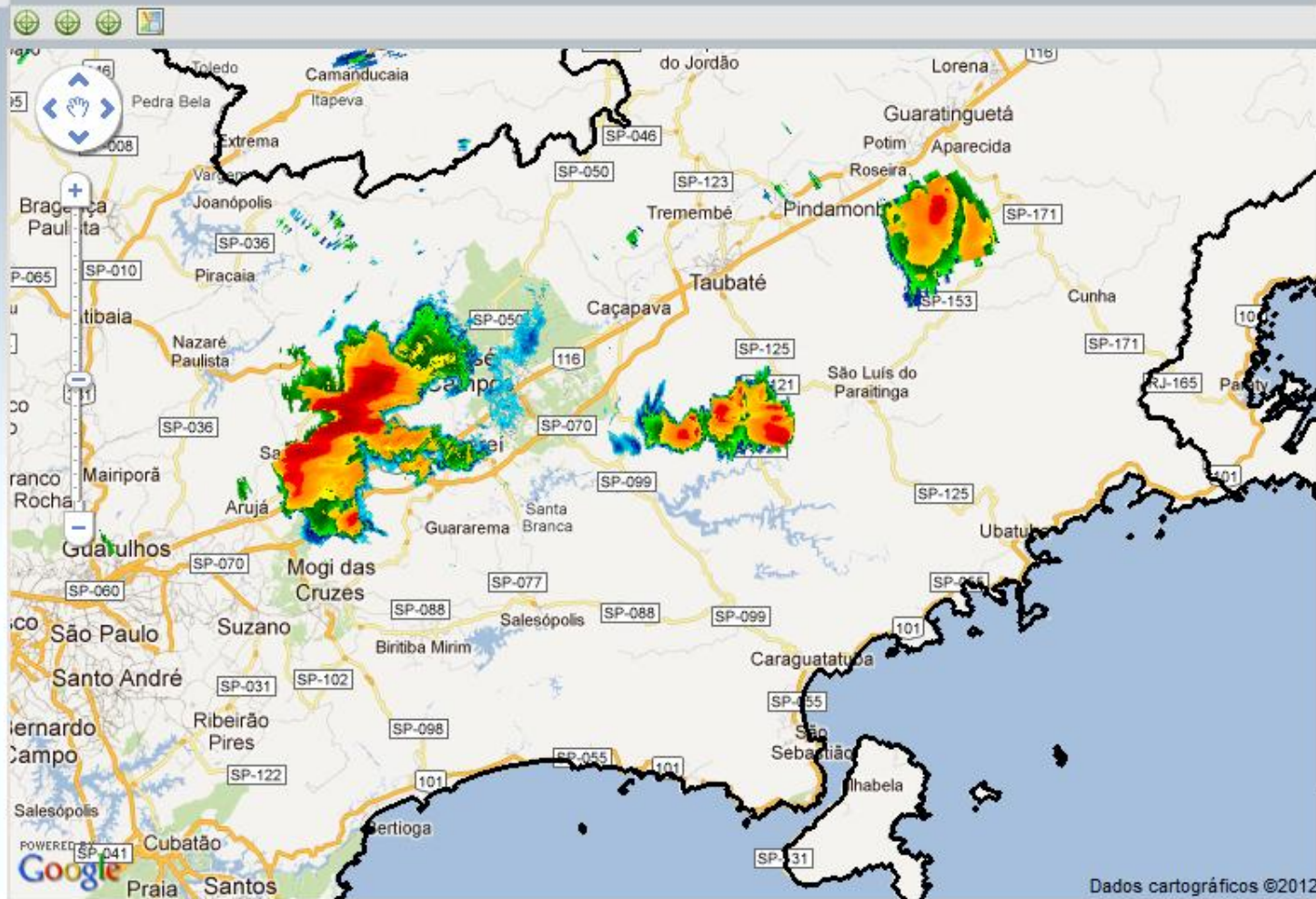
Fortracc-Prev. 18min.

 Fortracc-Prev. 36min.

☐ LMA (Fontes de raios totais)

INFORMAR FALHAS

Comunicação de Falhas



Dados cartográficos ©2012

☒ Prec. Instantănea

Previsão 30min.

☒ Fortracc-Prev. 18min.


 Fortracc-Prev.

☐ LMA (Fontes de raios totais)

24-02-2012

☐ Prec. Instantănea

 Previsão 30min.

 Fortracc-Prev, 18min.

Fortracc-Prev. 36min.

☐ LMA (Fontes de raios totais)

27-03-2012

☐ Prec. Instantănea

 Previsão 30min.

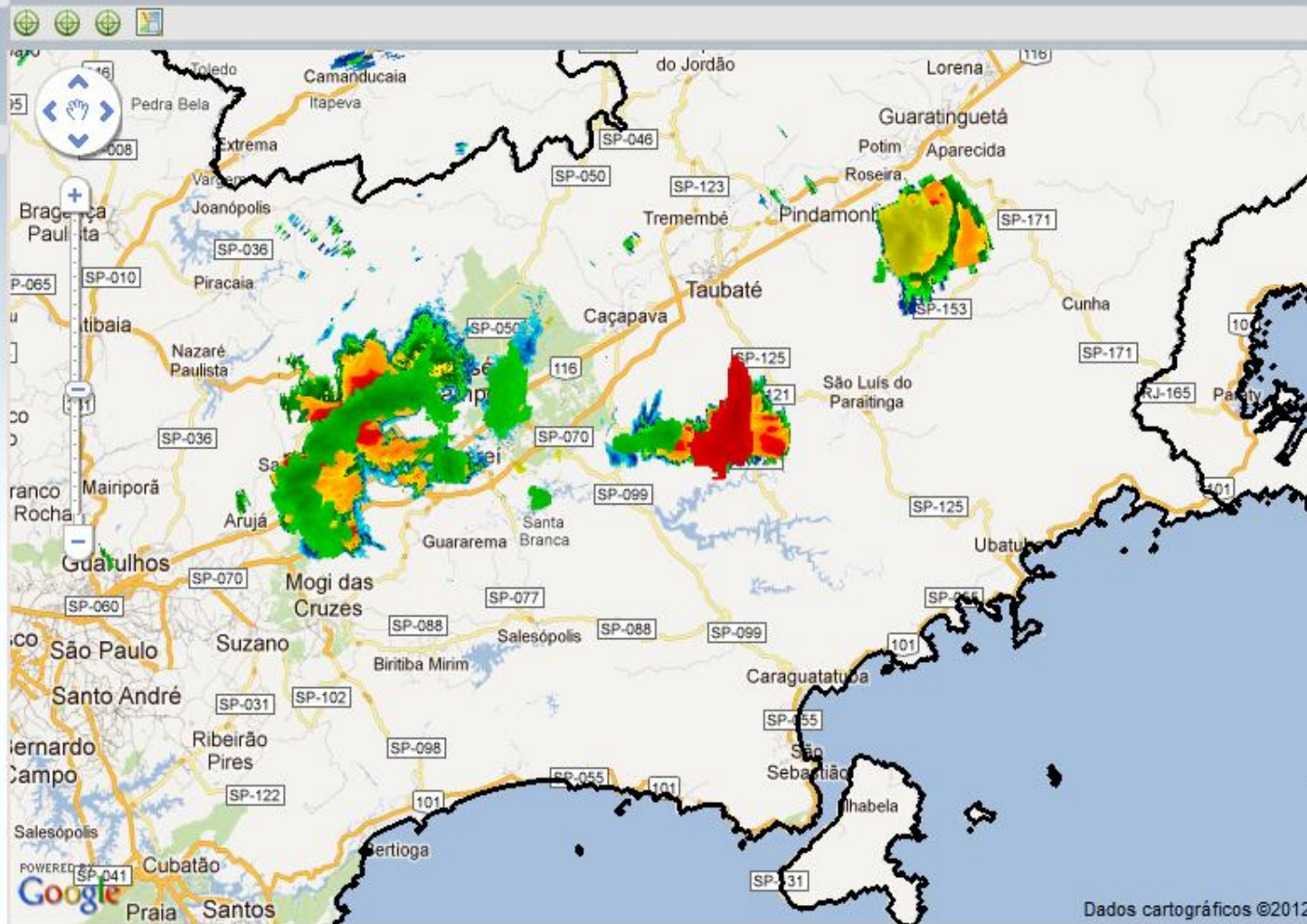
 Fortracc-Prev. 18min.

 Fortracc-Prev. 36min.

☐ LMA (Fontes de raios totais)

INFORMAR FALHAS

Comunicação de Falhas



Dados cartográficos ©2012

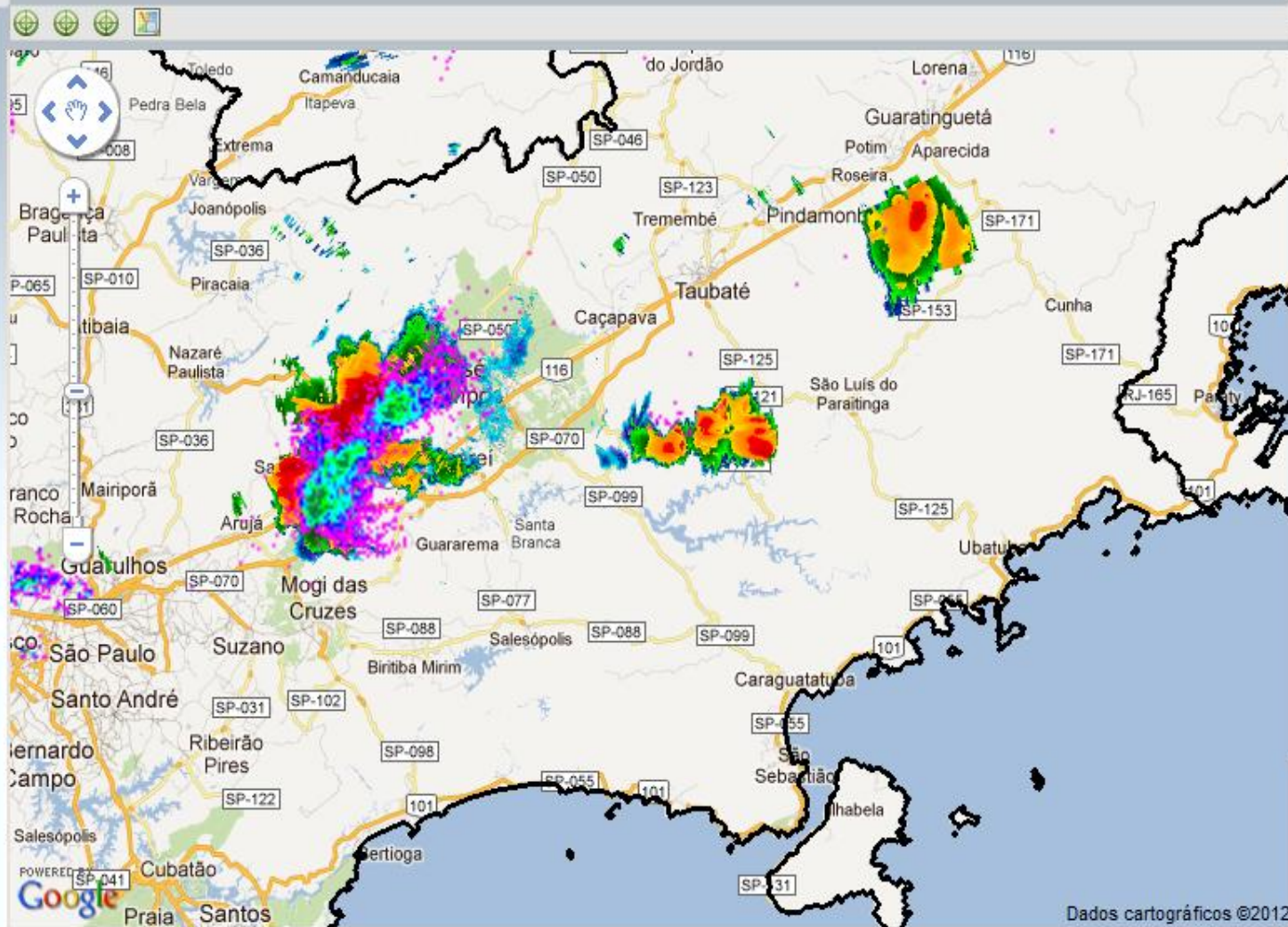
Prec. Instantânea

☐ Previsão 30min.☐ Fortracc-Prev. 18min.☐ Fortracc-Prev. 36min.☒ LMA (Fontes de raios totais)

24-02-2012

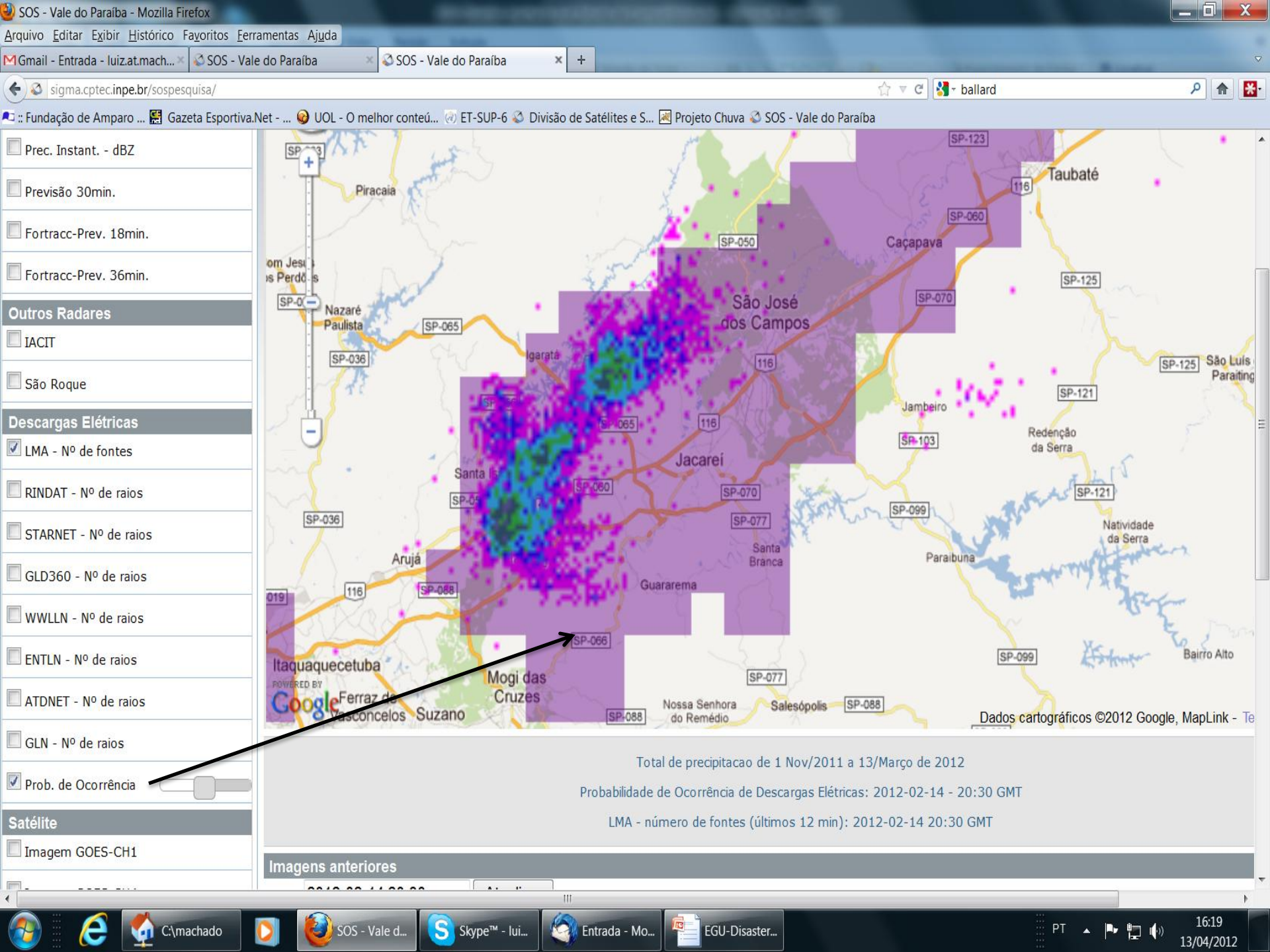
☐ Prec. Instantânea☐ Previsão 30min.☐ Fortracc-Prev. 18min.☐ Fortracc-Prev. 36min.☐ LMA (Fontes de raios totais)

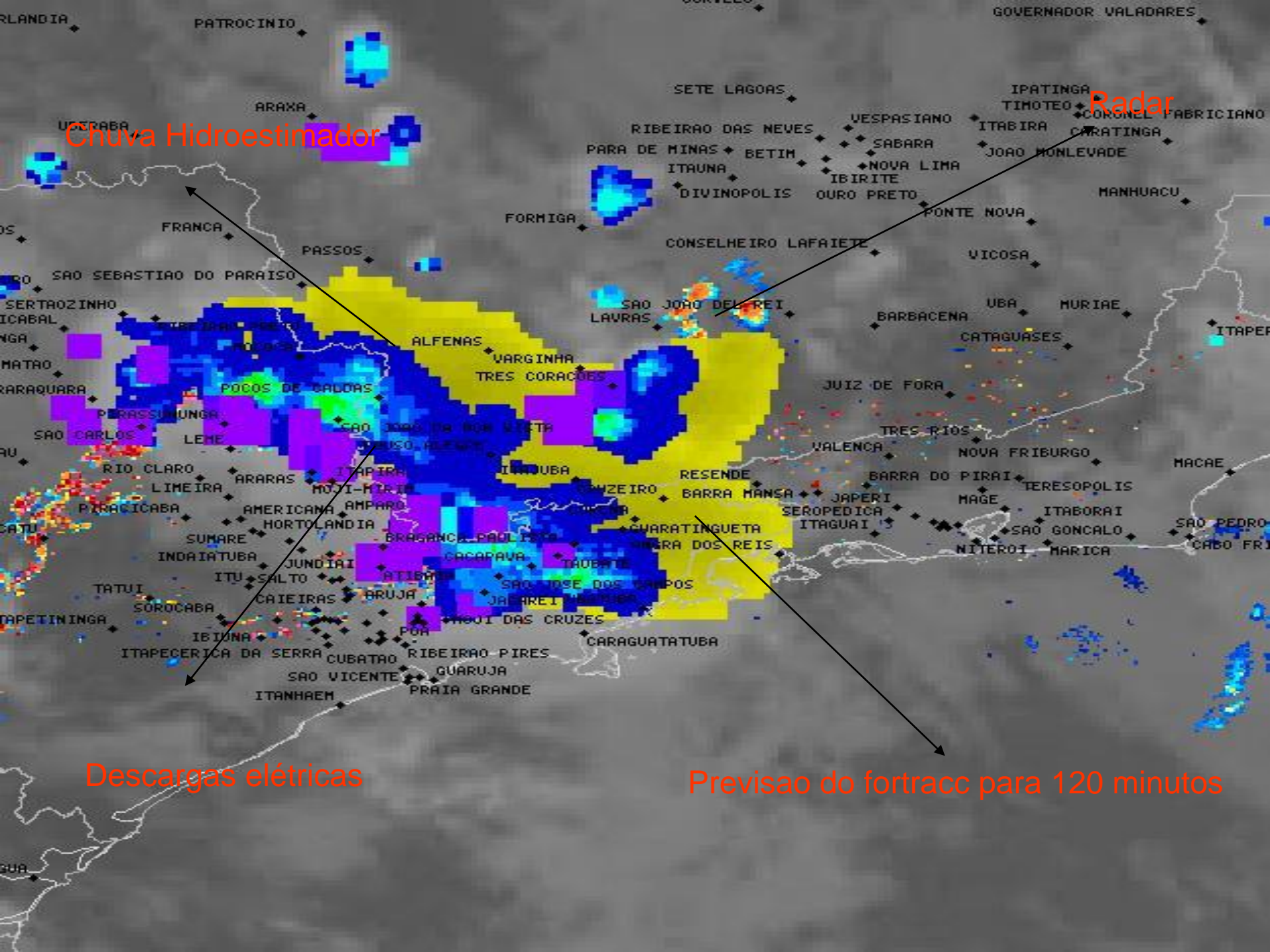
27-03-2012

☐ Prec. Instantânea☐ Previsão 30min.☐ Fortracc-Prev. 18min.☐ Fortracc-Prev. 36min.☐ LMA (Fontes de raios totais)

Dados cartográficos ©2012

Radar Banda X (Canal 2Km) - Chuva: 2012-02-24 18:30





Chuva Hidroestimador

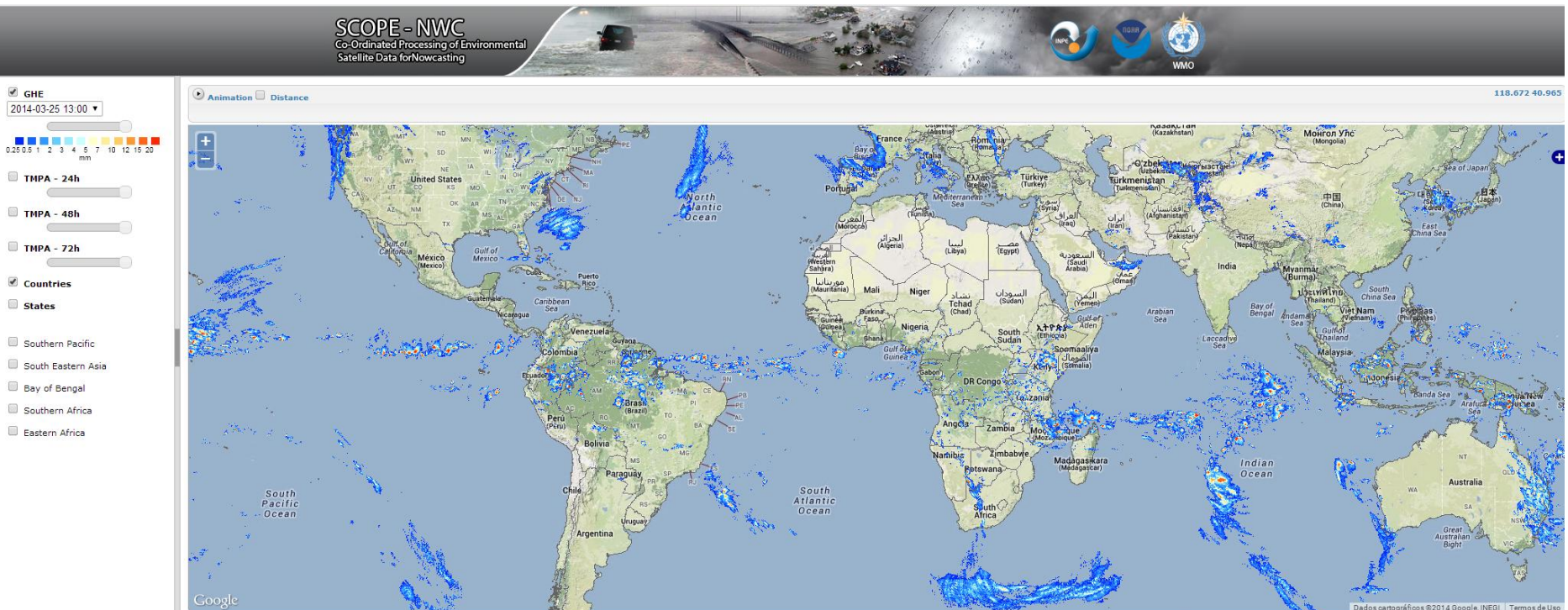
Radar

Descargas elétricas

Previsão do fortracc para 120 minutos

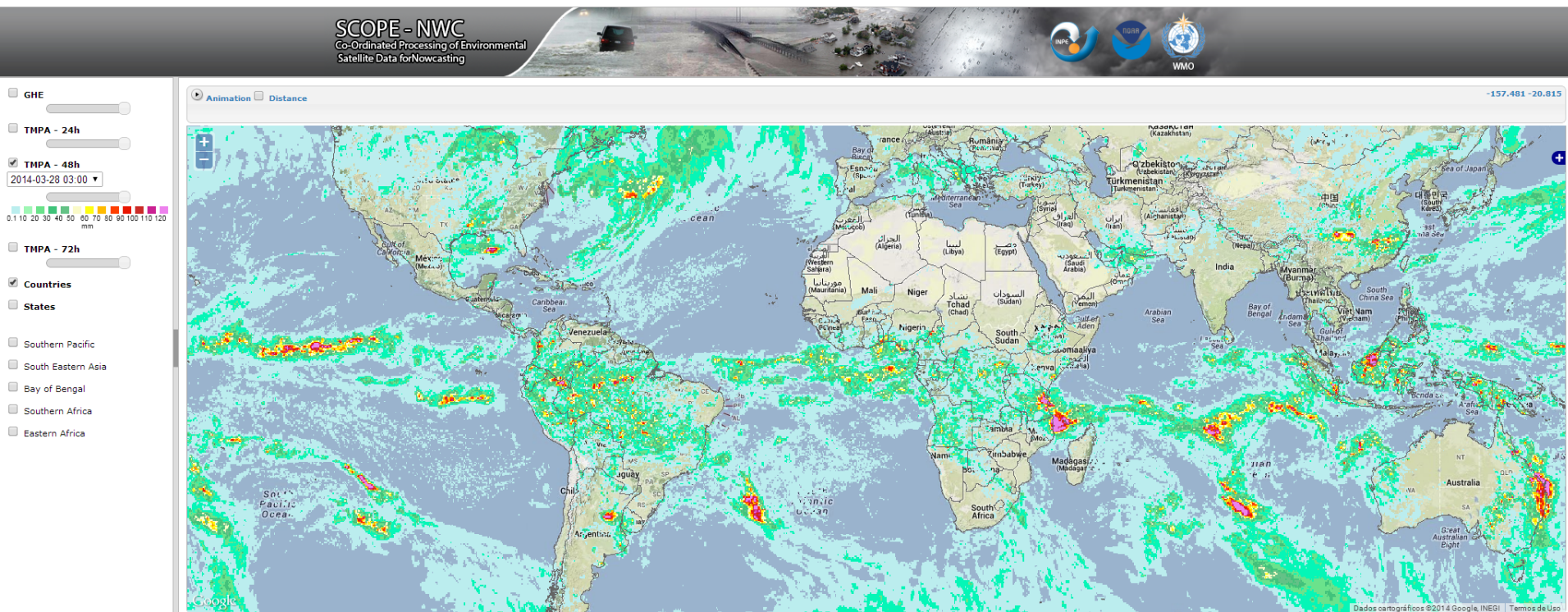
Sustained Coordinated Processing of Environmental Satellite Records for Nowcasting (SCOPE-Nowcasting) Near Real Time Precipitation Estimation

Geostationary Hydroestimator



Sustained Coordinated Processing of Environmental Satellite Records for Nowcasting (SCOPE-Nowcasting) Cumulative Precipitation 24, 48 and 72 hours

TRMM Multi-satellite Precipitation Analysis (TMPA)



Sustained Coordinated Processing of Environmental Satellite Records for
Nowcasting (SCOPE-Nowcasting)
3 hours Precipitation Nowcasting

Geostationary Hydroestimator + ForTracc

