



GOBIERNO  
DE ESPAÑA

MINISTERIO  
DE AGRICULTURA, ALIMENTACIÓN  
Y MEDIO AMBIENTE

**AEMet**  
Agencia Estatal de Meteorología

# Nowcasting Severe Weather Experiment - 2011 NoSWEx

Ana Genovés  
(DDA, AEMET, Spain)

2012 CWG Workshop, Prague, 27-30/03/2012

# AEMET NoSWEx (R & D & i): 17 Oct. – 11 Nov. 2011



GOBIERNO  
DE ESPAÑA

MINISTERIO  
DE AGRICULTURA, ALIMENTACIÓN  
Y MEDIO AMBIENTE

AEMET  
Agencia Estatal de Meteorología

- Test actual Very-Short Range and Nowcasting capabilities of a nowadays complete system: Forecast before observation (CI), 3h/1h QPF
- Area of interest: mainland Spain and the Balearic Islands, mainly focused in the Mediterranean
- Real time non-operational environment (shifts, no nights, no weekends): 8 forecasters geographically distant (web working (**ecCharts**), briefings by videoconf.)

## Combined use of:

- Medium and short range systems: ECMWF-EPS, AEMET-SREPS
- Deterministic NWP models: ECMWF, HIRLAM)
- Convection-allowing models: HARMONIE, Arôme-France (courtesy of Météo-France)
- EUMETSAT Satellite Application Facilities for Nowcasting (NWC SAF)
- Spanish radar network; Real-time observation network: (E-AMDAR inc)

Flow uncertainties:  
focus on the  
possible event

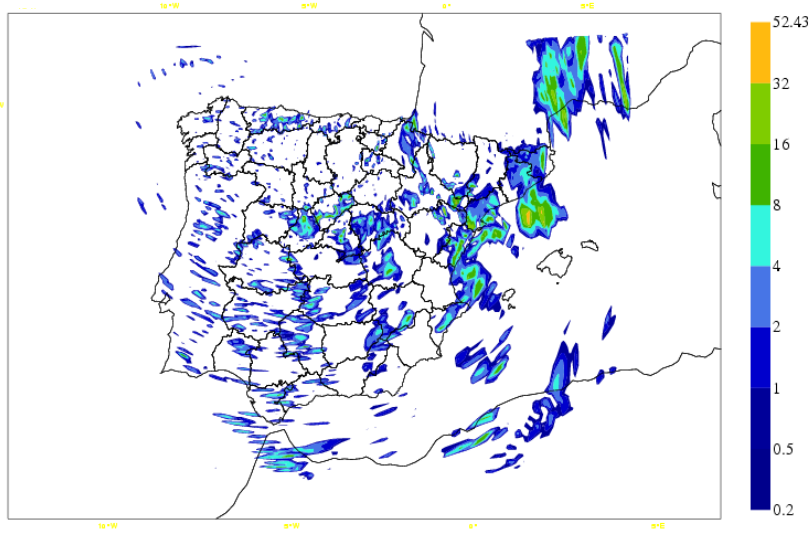
H+6/H+3  
Forecast

H+3/H+1

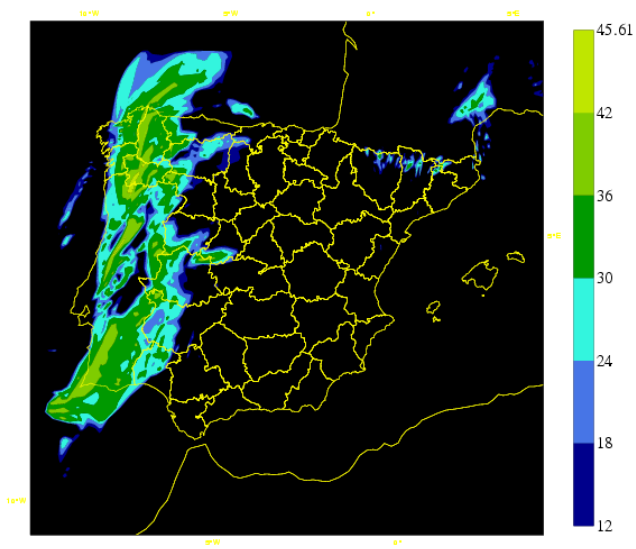
Nowcast  
+  
Observation

# PE1-2

HARM Lluvia (mm/hr)  
24/11/2011 06z HARM H+ 10 Valid: 04/11/2011 16z



24/10/2011 00z HARM H+ 01 Valid: 24/10/2011 01z

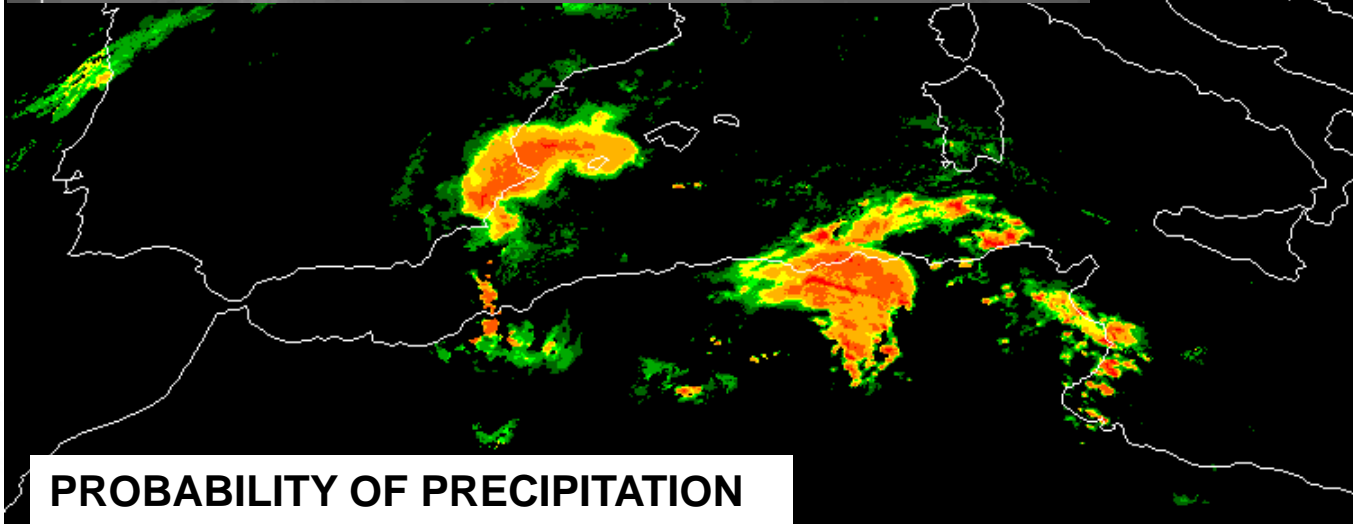
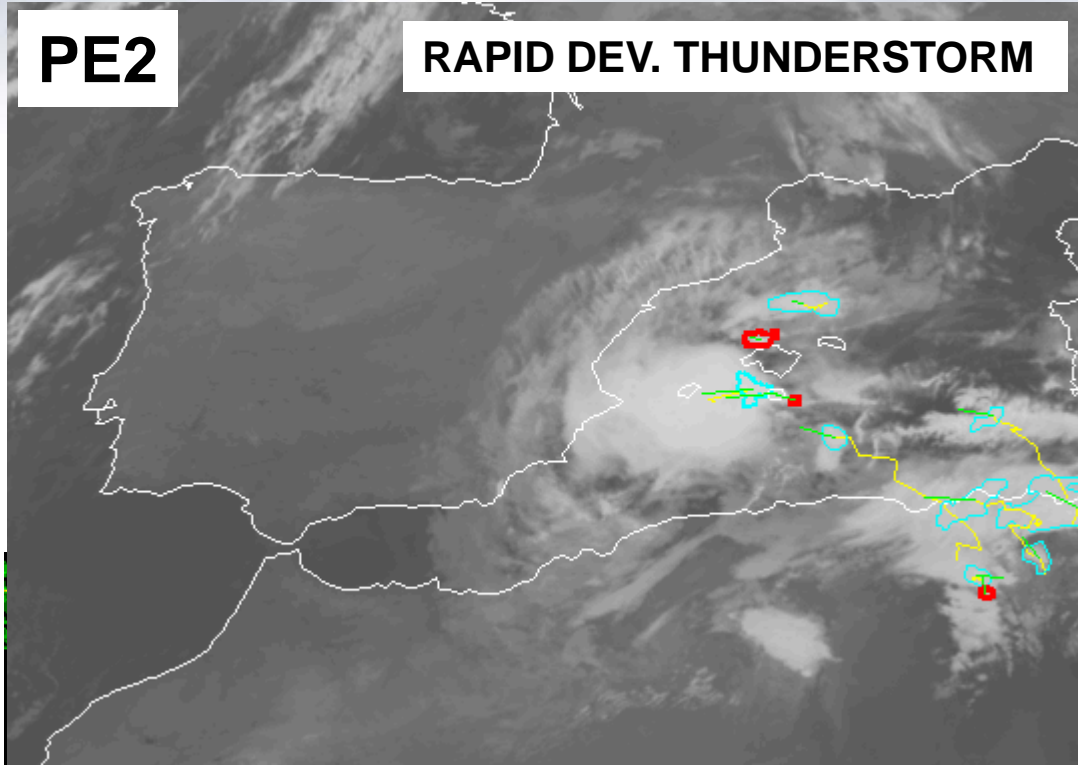


**EDMF Reflectivity 300m**

**24/10/2011 00 UTC H+01. Valid: 24/10/2011 01 UTC**

PE2

RAPID DEV. THUNDERSTORM



65-100%

55-65%

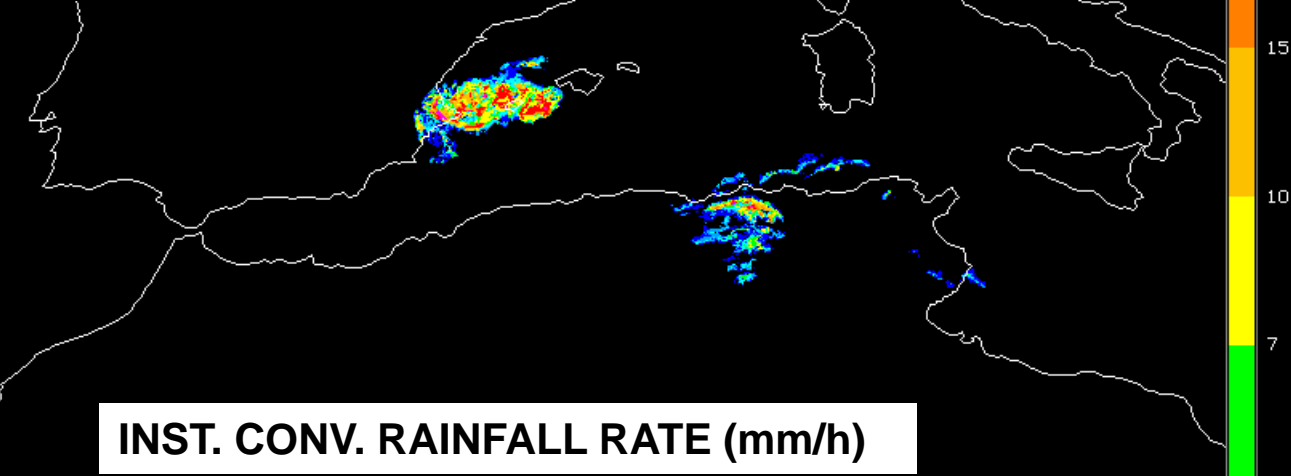
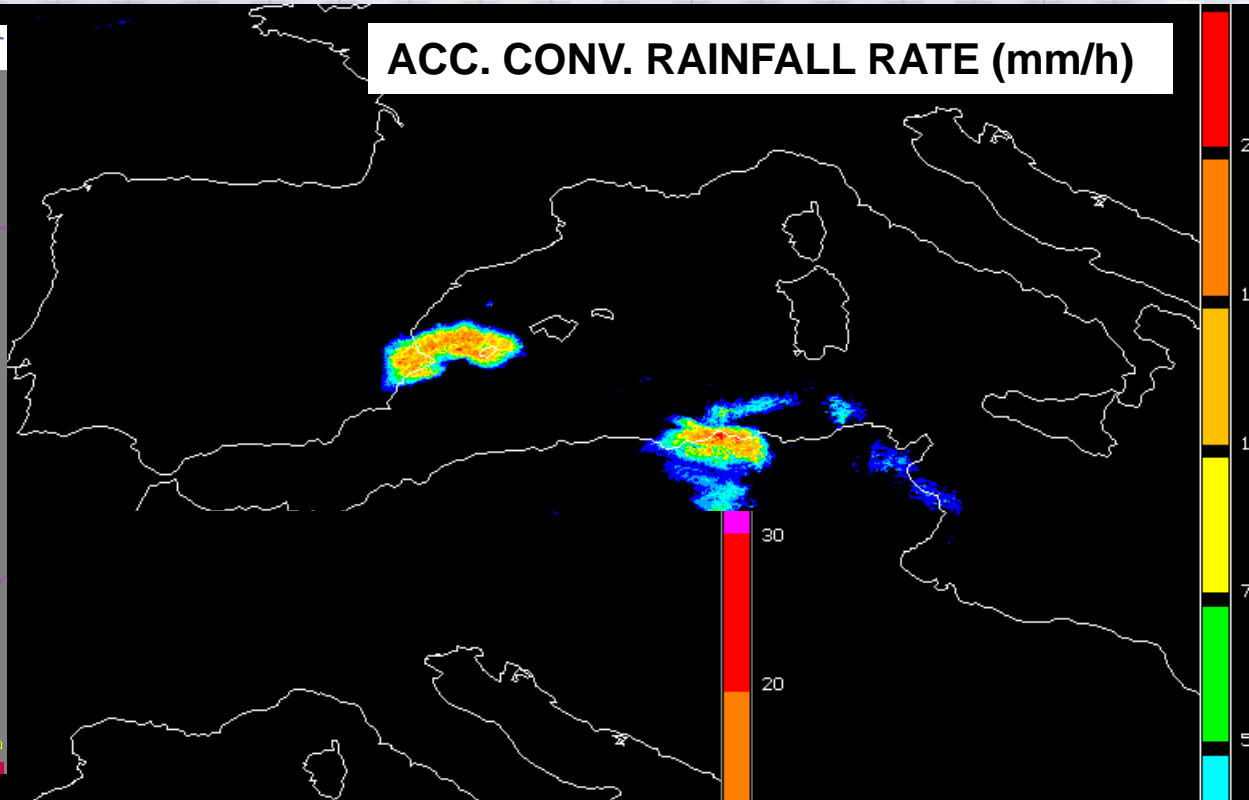
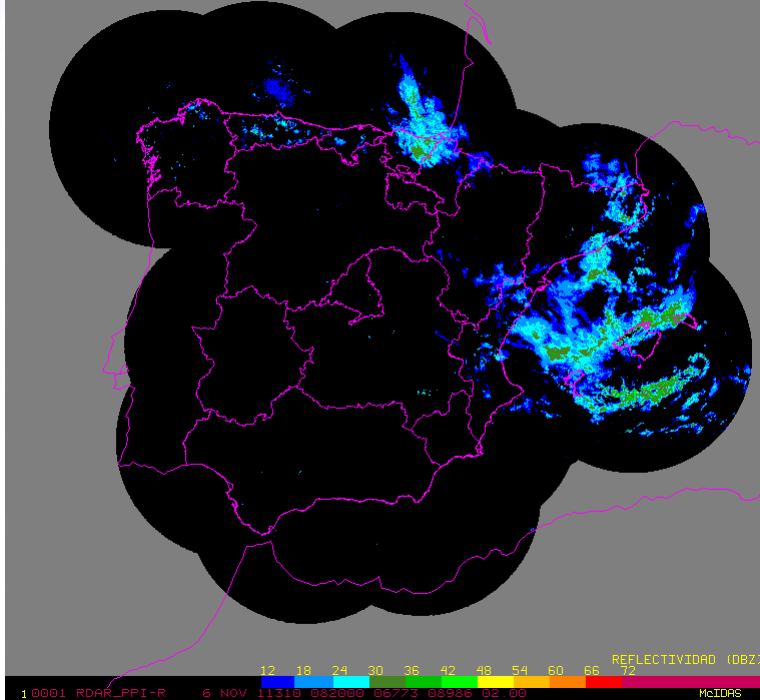
45-55%

35-45%

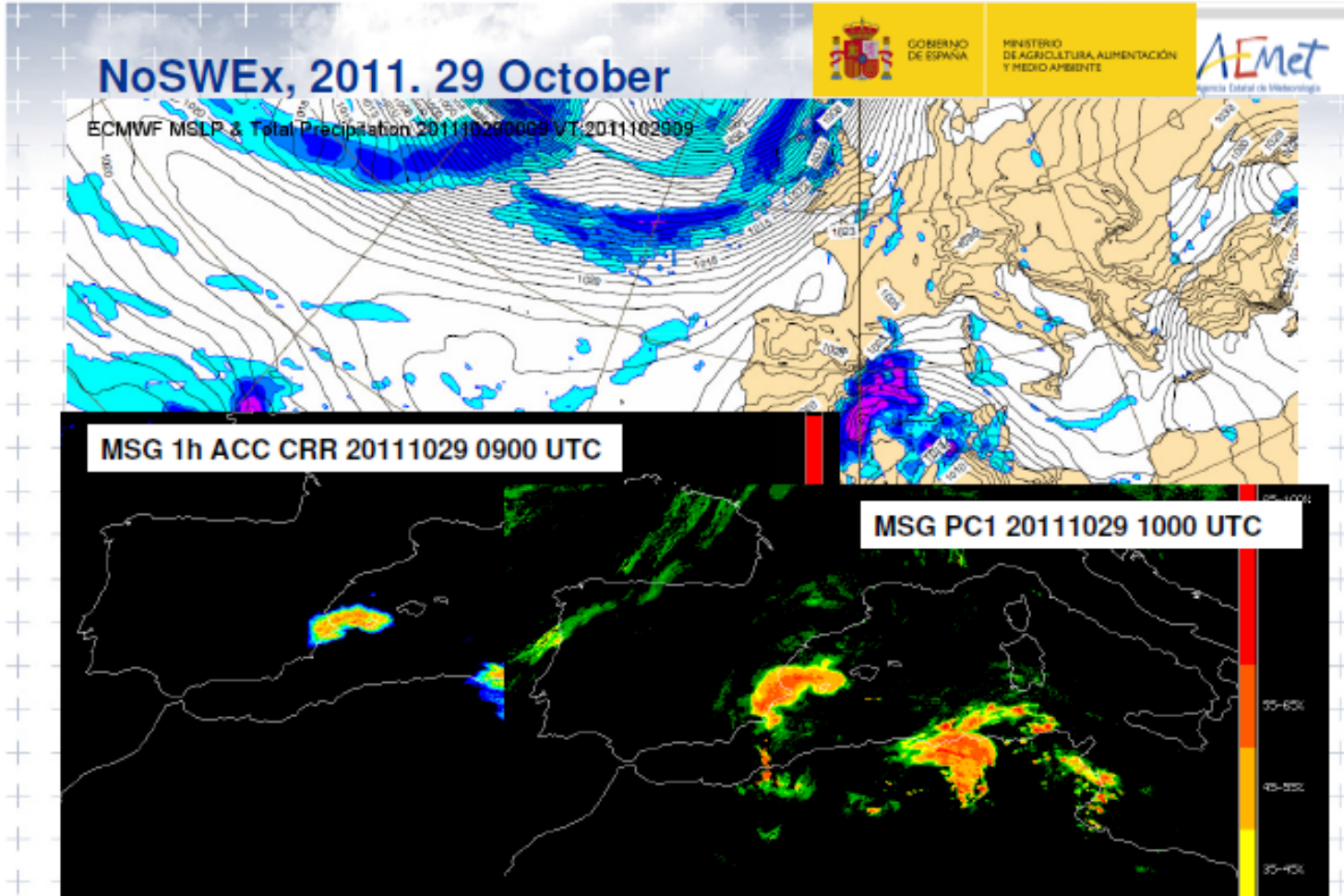
PROBABILITY OF PRECIPITATION

© Agencia Estatal de Meteorología

### ACC. CONV. RAINFALL RATE (mm/h)



### INST. CONV. RAINFALL RATE (mm/h)



AEMET, Agencia Estatal de Meteorología

25